

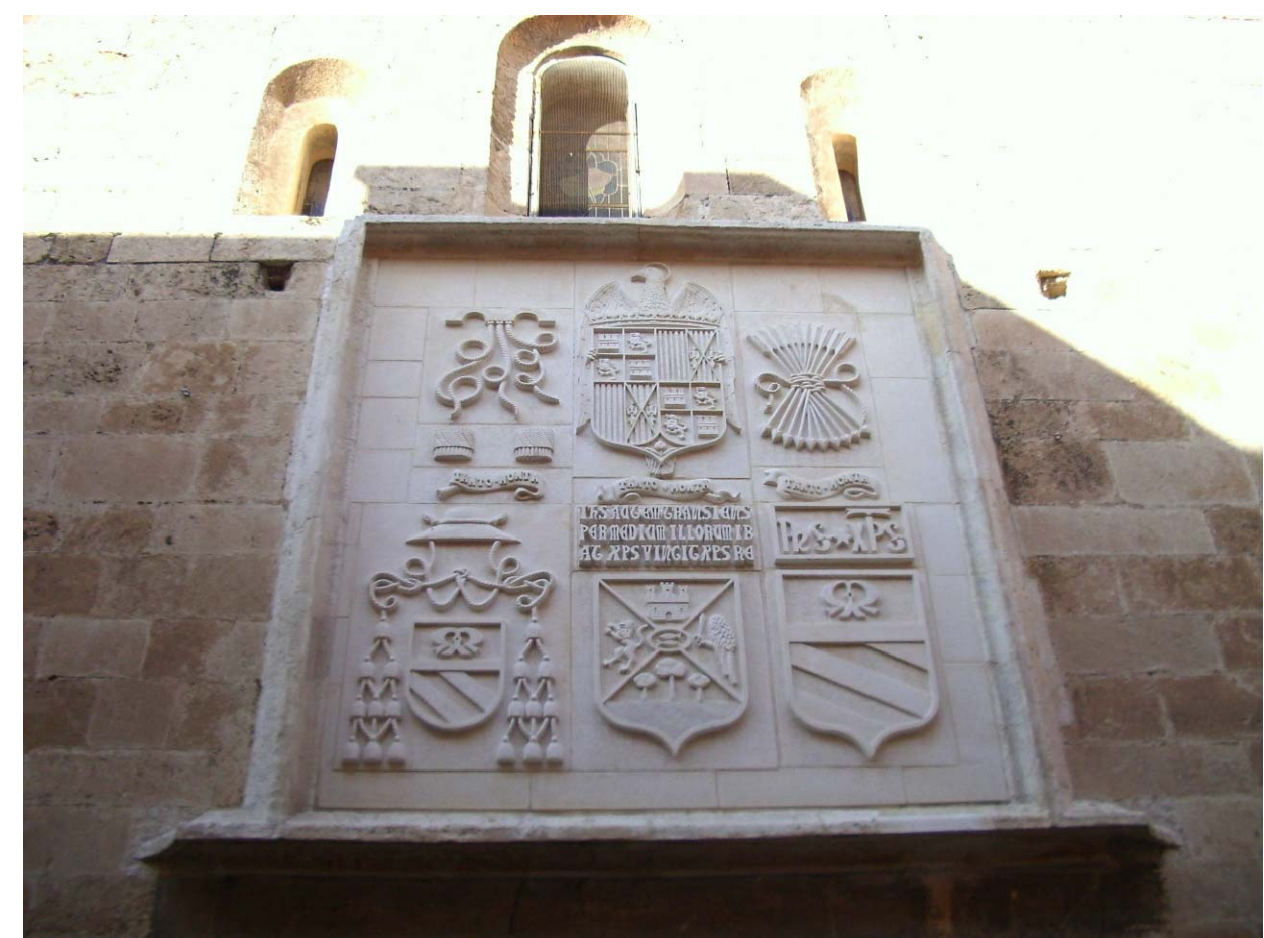
Cubierta de la Capilla



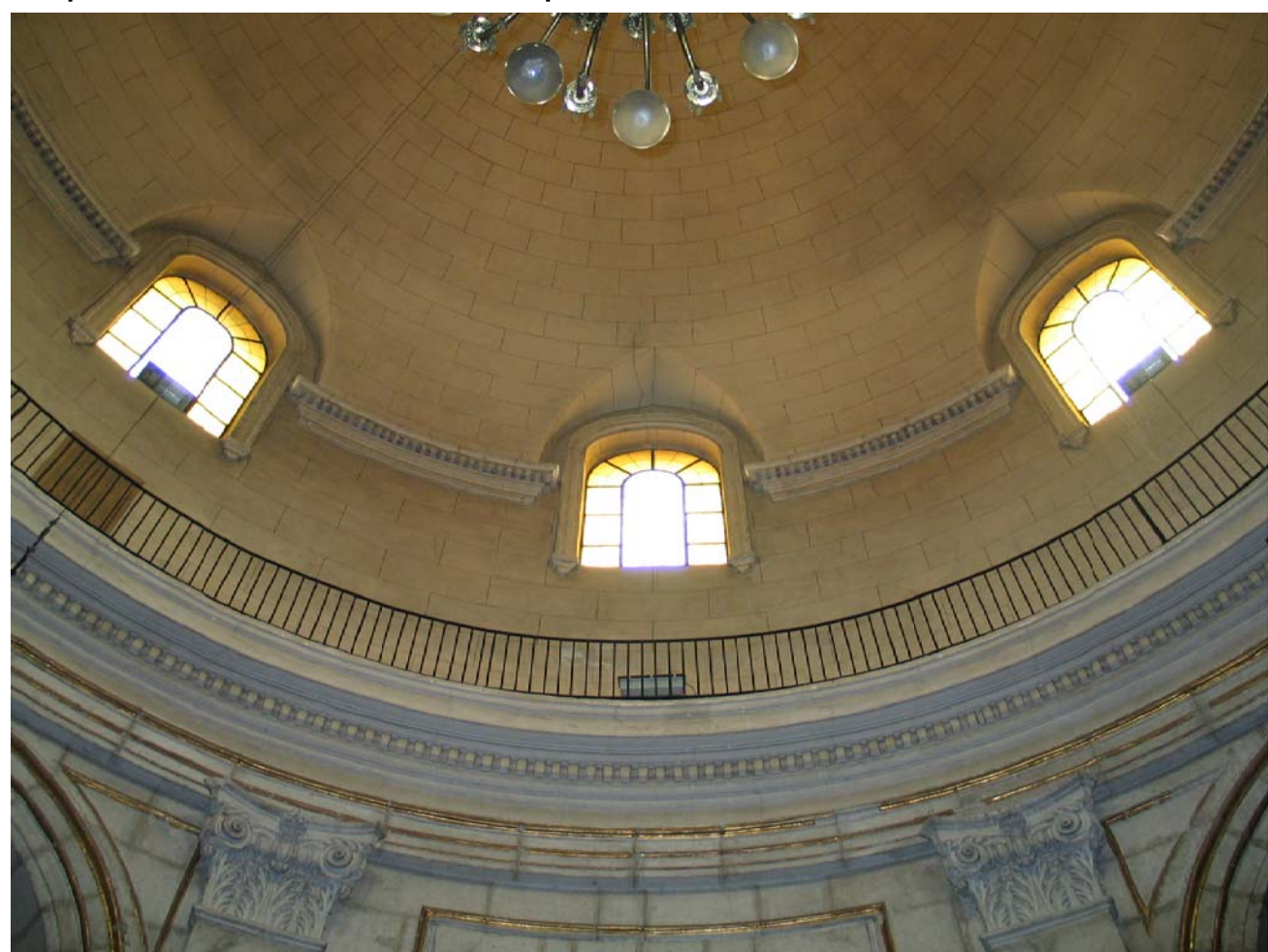
Alzado C/ Párroco Azorín



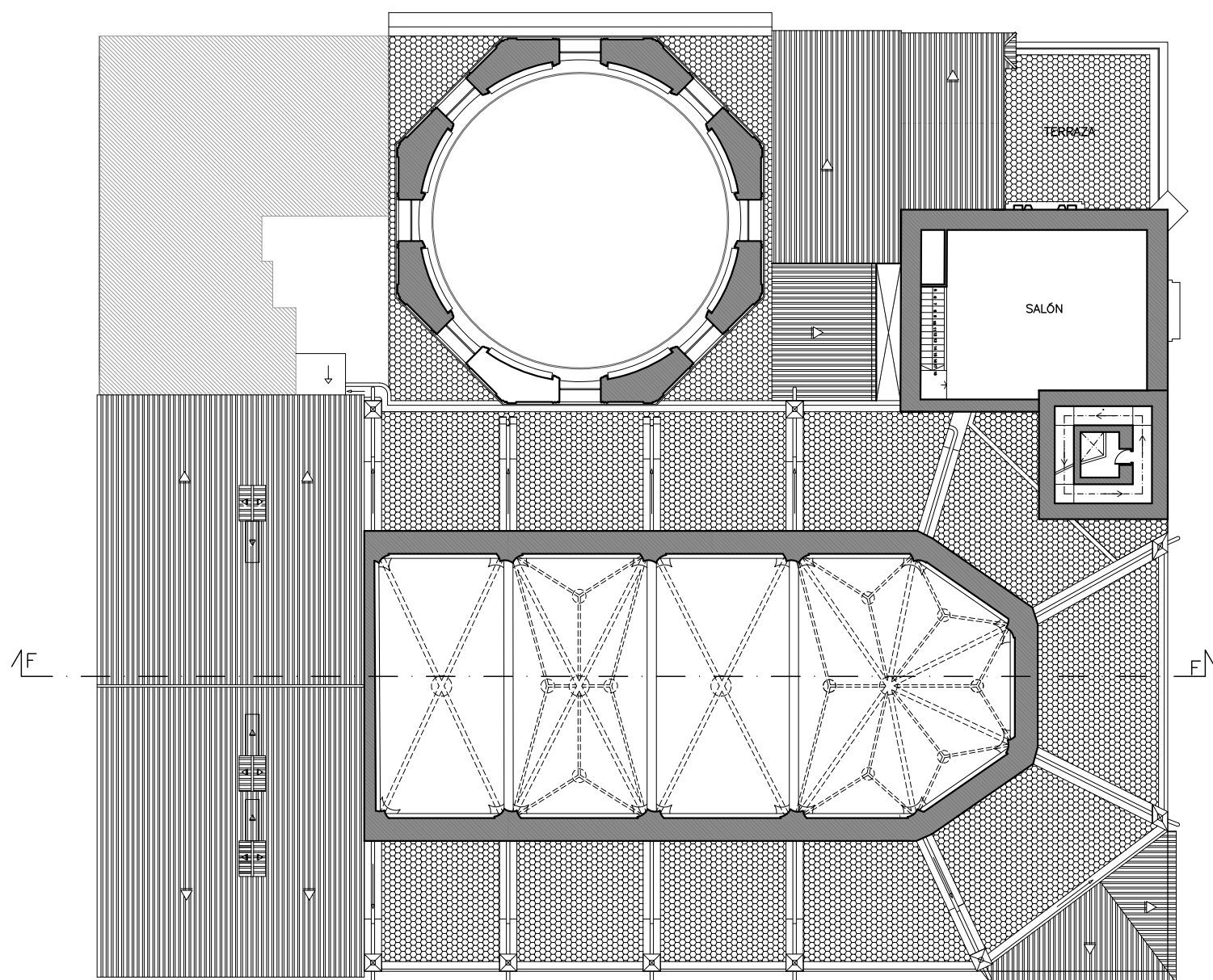
Restauración del conjunto de escudos



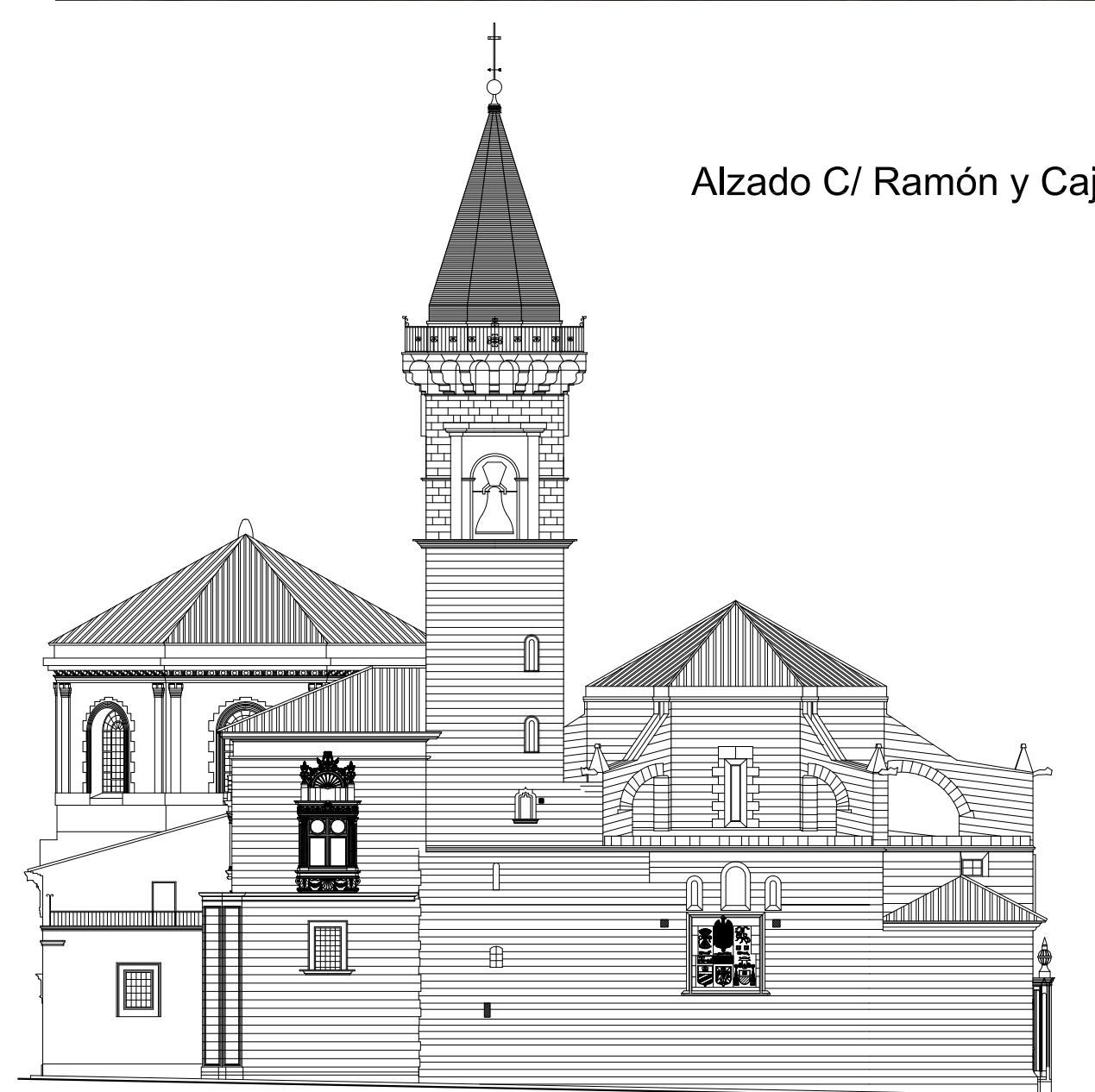
Cúpula del interior de la Capilla



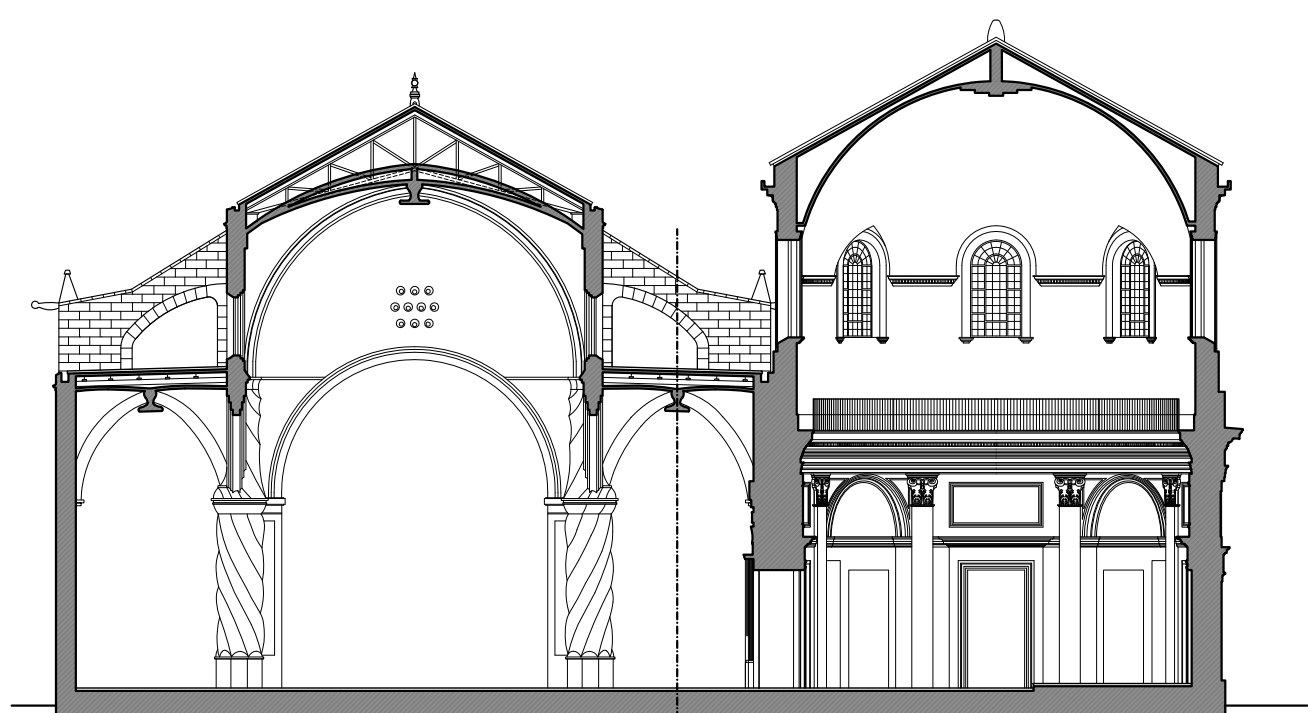
Planta +16.00m.



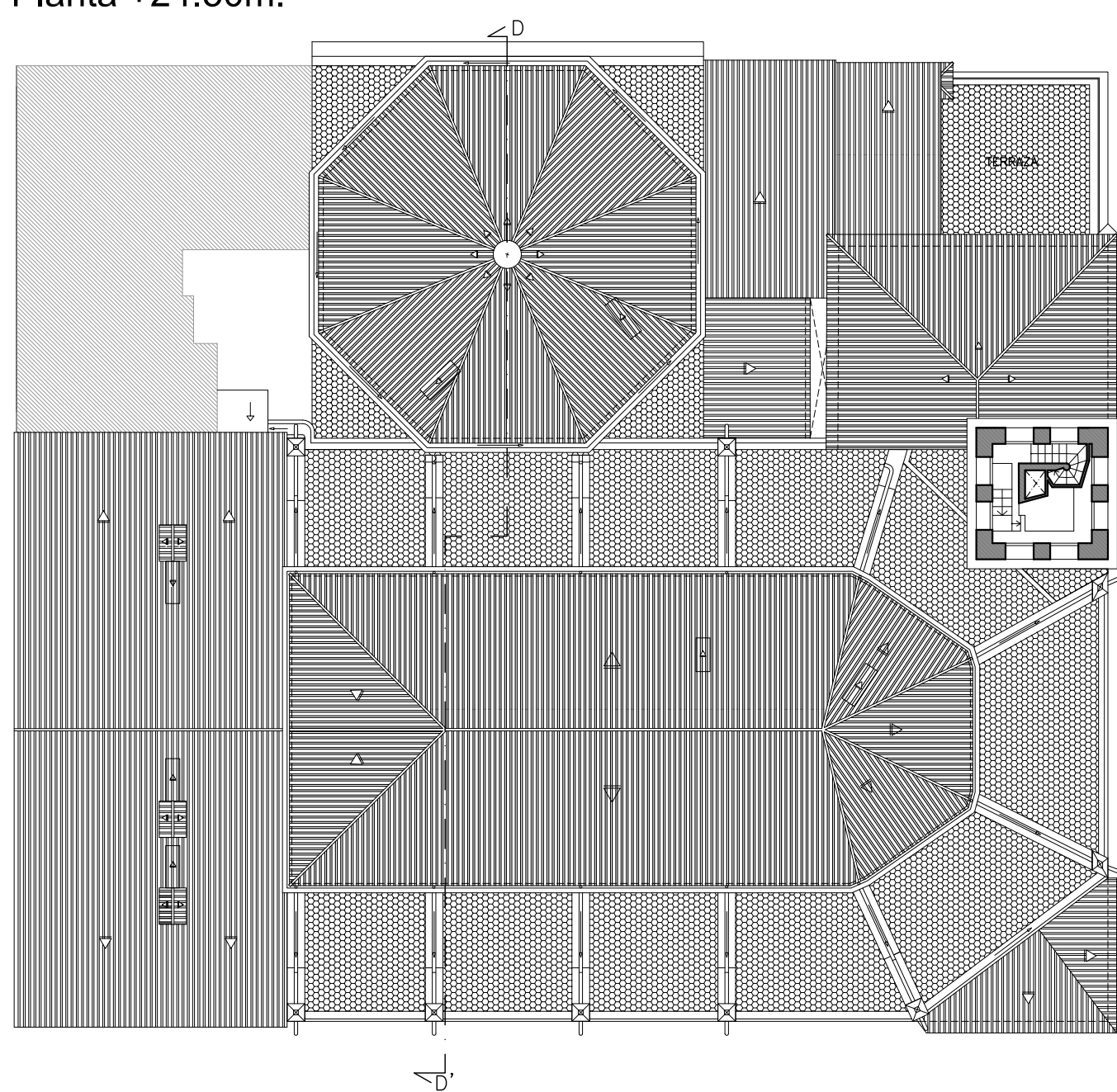
Alzado C/ Ramón y Cajal



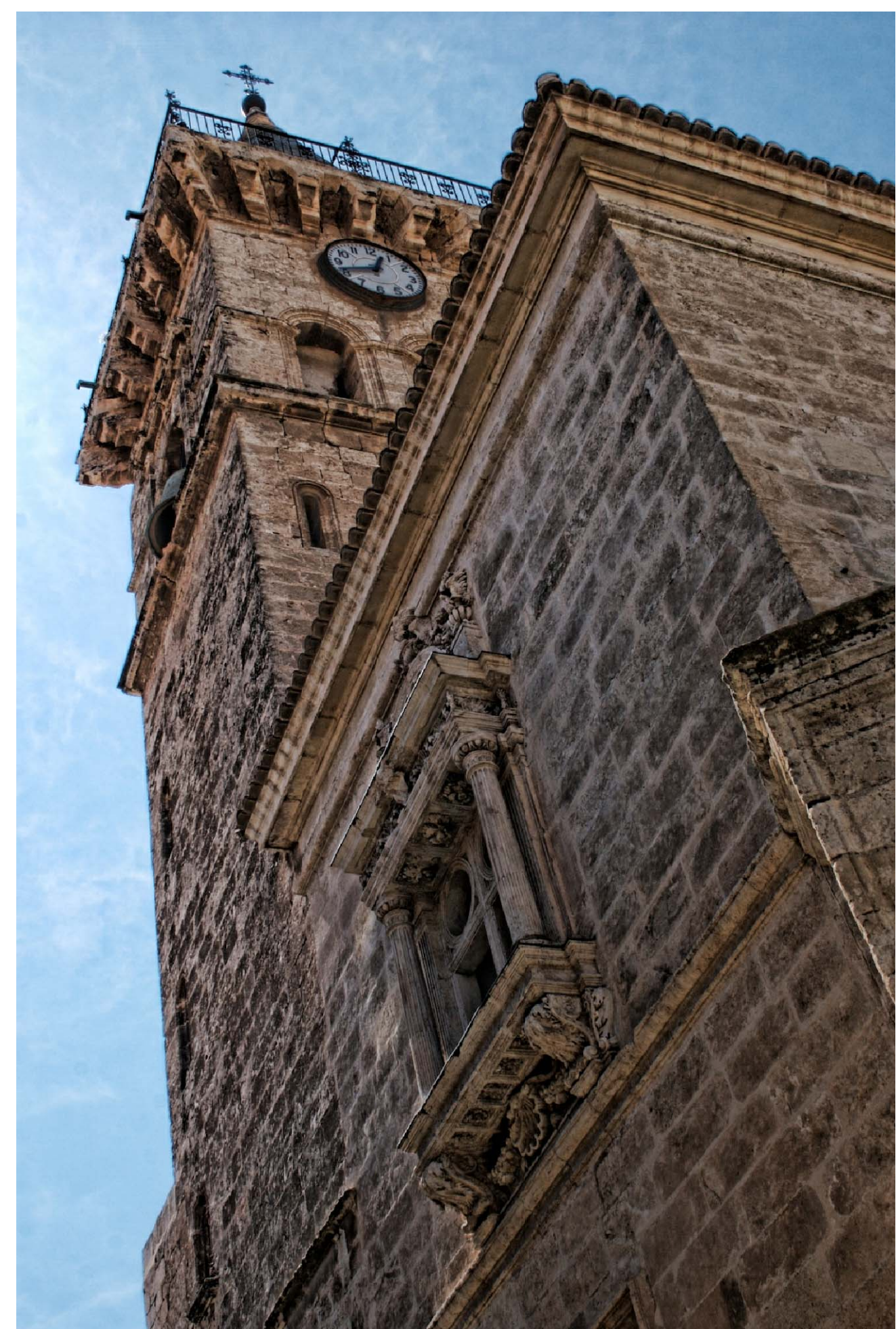
Sección DD'



Planta +24.50m.



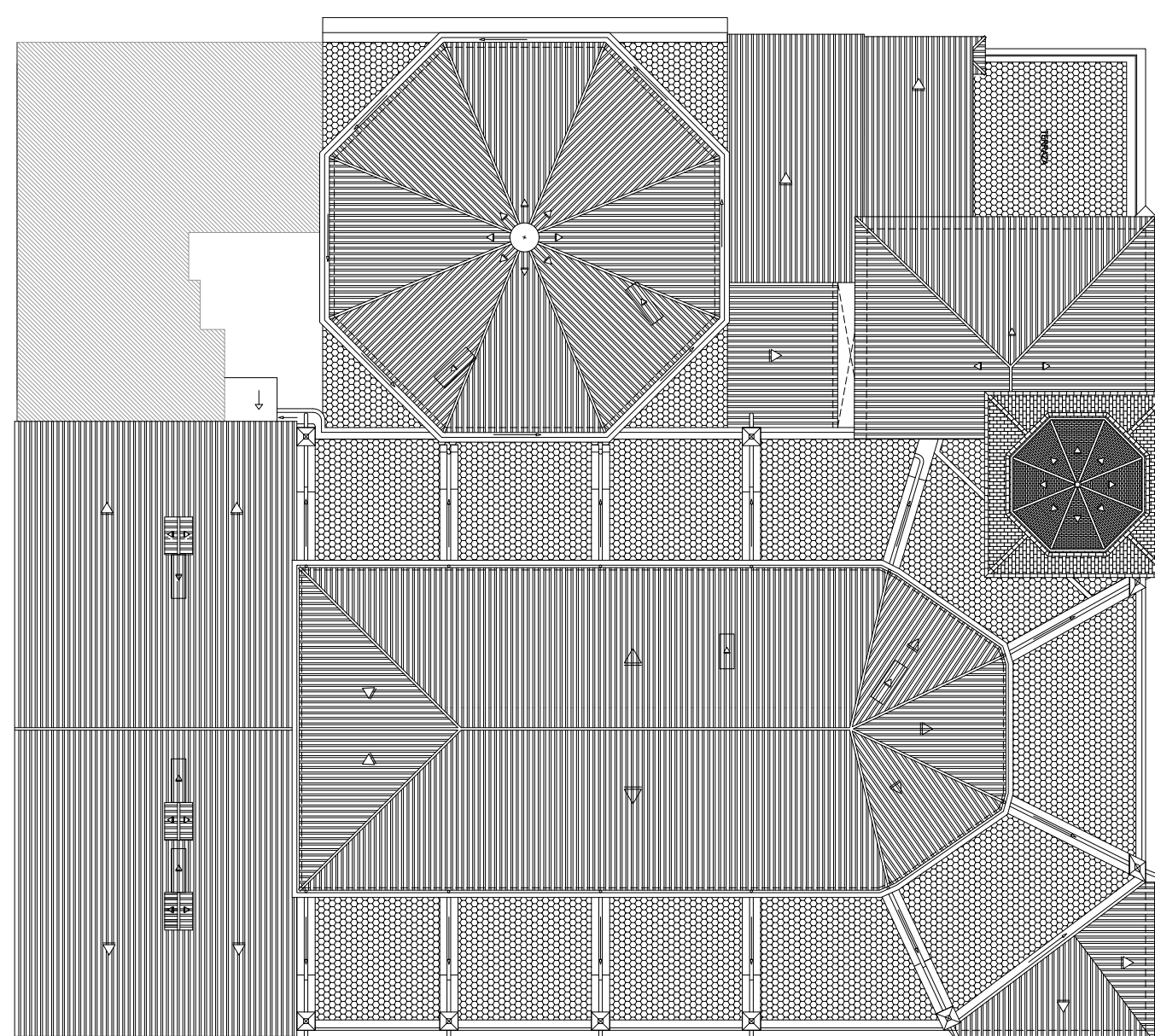
Torre y ventana desde C/ Ramón y Cajal



Encuentro de contrafuertes



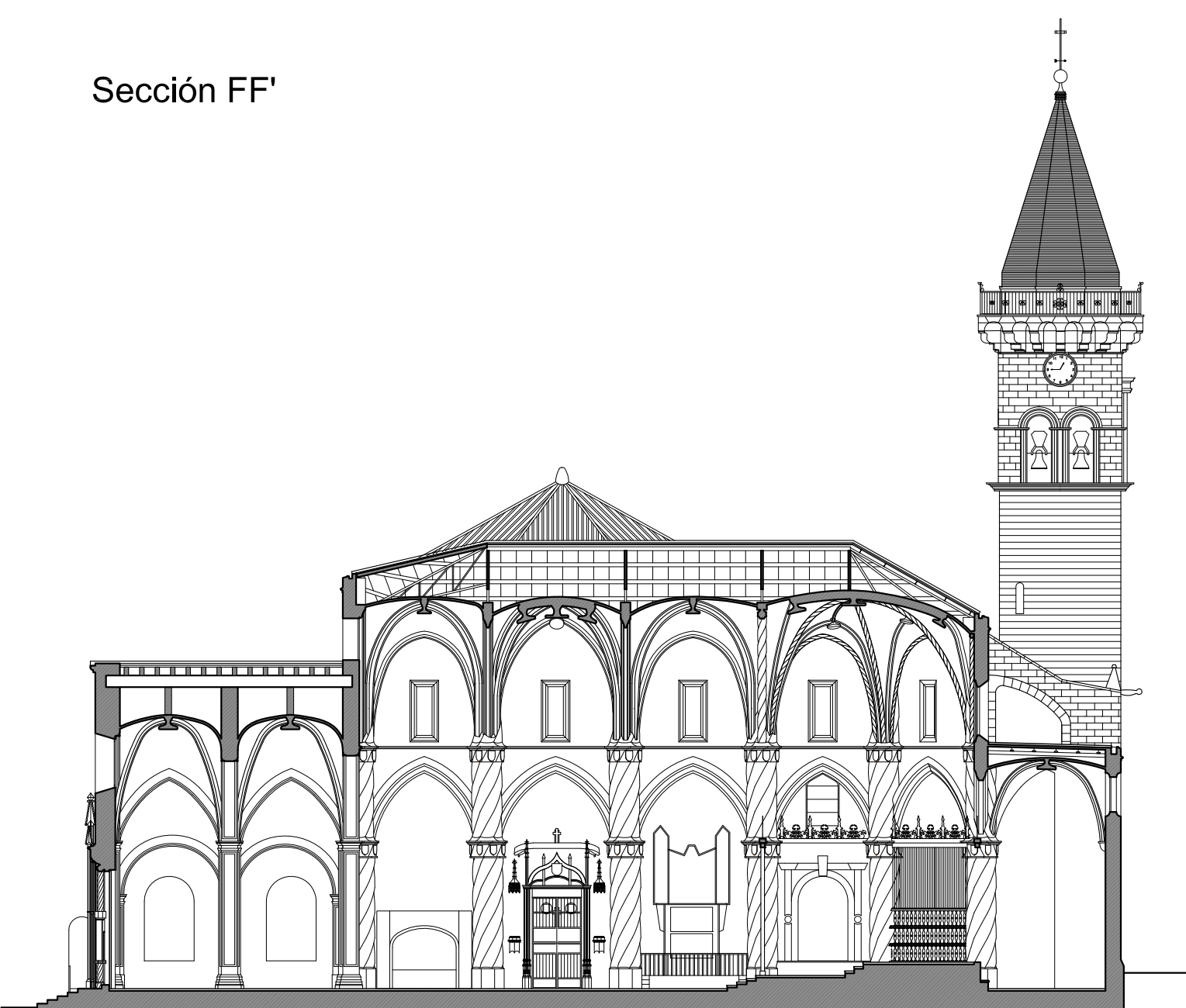
Planta cubiertas



Cubierta de la nave central



Sección FF'



Contrafuertes de la Iglesia

